

# EXPORTING 2-D Files FROM REVIT: 6000 pixels, PNG Format preferable (transparent background)

All Files need to be the same size and aspect ratio. Please use the *thinnest line-weight possible* for hidden-line views.

1) Rendering as exists in Revit (Composite) with all design elements, shaded/textured with shadows trees & people included for scale.



Please note if you want specific cropping.

ISOLATE These Categories in separate files:

**OMIT IN ALL: PEOPLE / VEGETATION / TREES & BACKGROUND ELEMENTS (Sky, ground)**

2) **FFA:** Lamps, Tables, Pots, Umbrellas, Fountains, Kiosks

Note: any elements that may need future revisions please separate. In this example, if the seating was to be revised in the future, it should be isolated in its own file removed from the umbrellas, tables and posts.

3) **Transportation, Signage, Rails:**

Please separate if they overlap

4) **Buildings**

(Please separate buildings that may need future revisions)

5) **Hardscape**

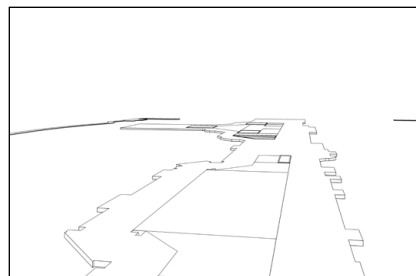
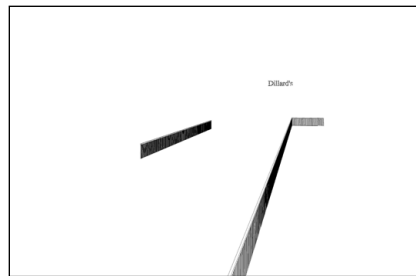
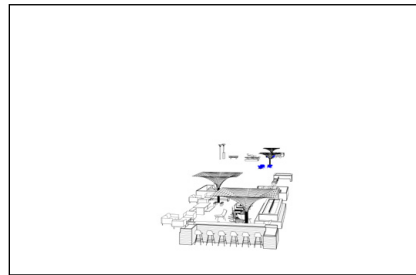
(Roads, walks, planters, etc.)

6) **Shadows ONLY (No lines)**

So for this example, you would send me a total of 10 files, (14 files if you are sending me both B) shaded and C) textured views).

Dane Spangler Illustration • 505 358 4108 • [dane@dsfaphoto.com](mailto:dane@dsfaphoto.com)

**A) Hidden Line**  
**LINES ONLY** (Essential)



**B) Shaded and/or C) Textured**  
**OMIT LINES** (Useful, not essential)

